

Технические характеристики

По вопросам продаж и поддержки обращайтесь:

Алматы (7273)495-231	Казань (843)206-01-48	Новокузнецк (3843)20-46-81	Смоленск (4812)29-41-54
Архангельск (8182)63-90-72	Калининград (4012)72-03-81	Новосибирск (383)227-86-73	Сочи (862)225-72-31
Астрахань (8512)99-46-04	Калуга (4842)92-23-67	Омск (3812)21-46-40	Ставрополь (8652)20-65-13
Барнаул (3852)73-04-60	Кемерово (3842)65-04-62	Орел (4862)44-53-42	Сургут (3462)77-98-35
Белгород (4722)40-23-64	Киров (8332)68-02-04	Оренбург (3532)37-68-04	Тверь (4822)63-31-35
Брянск (4832)59-03-52	Краснодар (861)203-40-90	Пенза (8412)22-31-16	Томск (3822)98-41-53
Владивосток (423)249-28-31	Красноярск (391)204-63-61	Пермь (342)205-81-47	Тула (4872)74-02-29
Волгоград (844)278-03-48	Курск (4712)77-13-04	Ростов-на-Дону (863)308-18-15	Тюмень (3452)66-21-18
Вологда (8172)26-41-59	Липецк (4742)52-20-81	Рязань (4912)46-61-64	Ульяновск (8422)24-23-59
Воронеж (473)204-51-73	Магнитогорск (3519)55-03-13	Самара (846)206-03-16	Уфа (347)229-48-12
Екатеринбург (343)384-55-89	Москва (495)268-04-70	Санкт-Петербург (812)309-46-40	Хабаровск (4212)92-98-04
Иваново (4932)77-34-06	Мурманск (8152)59-64-93	Саратов (845)249-38-78	Челябинск (351)202-03-61
Ижевск (3412)26-03-58	Набережные Челны (8552)20-53-41	Севастополь (8692)22-31-93	Череповец (8202)49-02-64
Иркутск (395)279-98-46	Нижний Новгород (831)429-08-12	Симферополь (3652)67-13-56	Ярославль (4852)69-52-93
Россия (495)268-04-70	Киргизия (996)312-96-26-47	Казахстан (7172)727-132	

Rubber bonded Regulating Wheels

atto abrasives Rubber Bonded Regulating Wheels are manufactured in a calendering process for optimum performance. They are available in various specifications to suit the material being worked and provide the required finish.

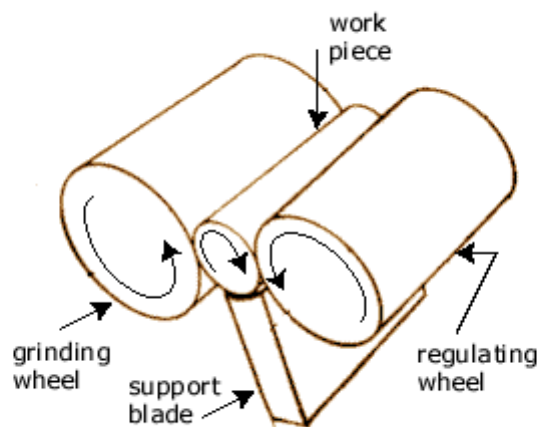
They are suitable for **in-feed**, **end-feed** and **through-feed** applications, and provide:

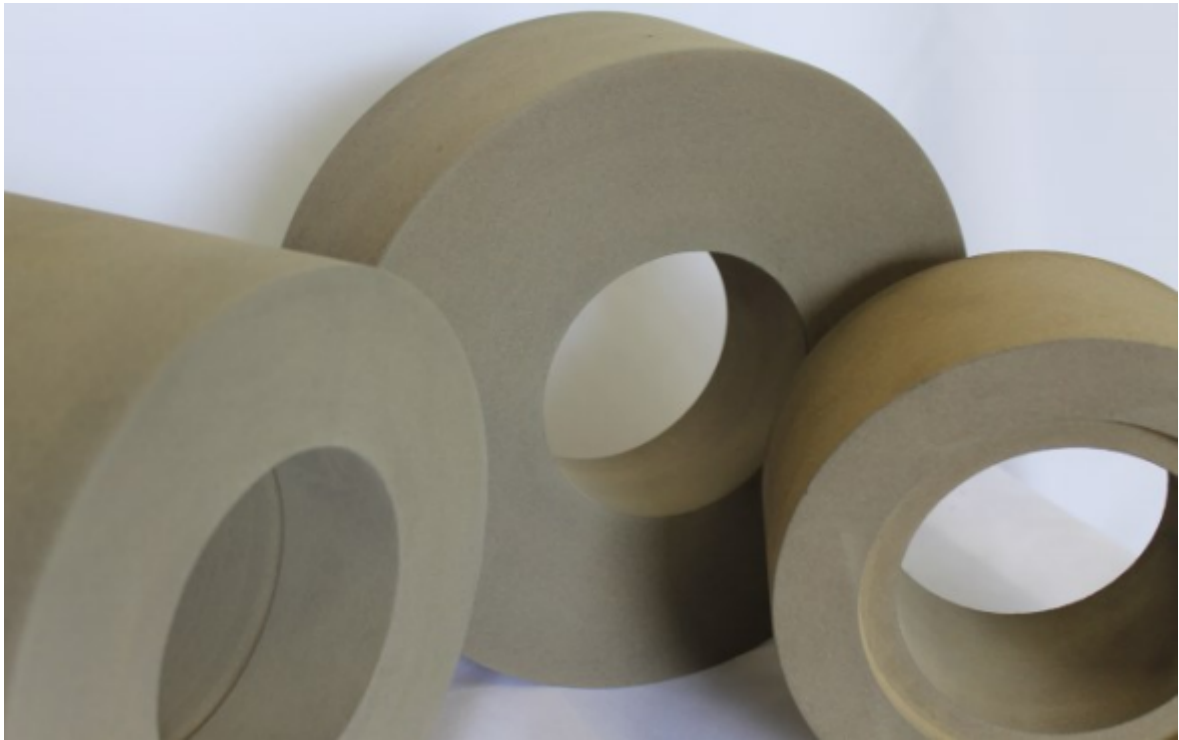
- Consistency
- Versatility
- Improved Gripping Power
- Longer Wheel Life
- Superior Performance

Regulating wheels play a huge role in centerless grinding. The regulating wheel regulates the speed of a part as it is rotated against a grinding wheel. This allows the regulating wheel to control the material removal rate, surface finish and geometry.

Full range of sizes & specifications available

- Diameters ranging from 2" to 24"
- Thicknesses ranging from 1/4" to 26" (available in sets)
- Available in a range of grit sizes
- Available as type 1, type 5 and type 7
- Steel Core wheels available for Glebar & Royal Master Machines
- Wheels with / without slots available





åtte abrasives Centerless range



åtte abrasives Cored Regulating wheels



CENTRELESS WHEELS

- 1. Regulating Wheels**
- 2. Cork Wheels**



Cork Centreless Polishing Wheels

atto Cork Wheels uniquely combine the properties of natural cork particles and abrasive grits in a special rubber matrix.

*Availability**

Grit Sizes:	Cork 10, 20 and 40
Thickness:	Up to 508mm (20")
Diameter:	Up to 610mm (24")
Types:	Standard types available
Sets:	Sets in different grits sizes available

** Special shapes and sizes available upon request*



Applications

Polishing and super-finishing of components such as:

- ◆ Taper Roller Bearings
- ◆ Shock Absorbers
- ◆ Hydraulic Piston Rings
- ◆ Steering Rods
- ◆ Shafts

The atto Abrasives product line includes,
but is not limited to:

- ⇒ Rubber Bonded Precision Cutting
Wheels
- ⇒ Resin Bonded Precision Cutting Wheels
- ⇒ Rubber Bonded Grinding and
Polishing Wheels
- ⇒ Polymer Bonded Super Finishing
Wheels

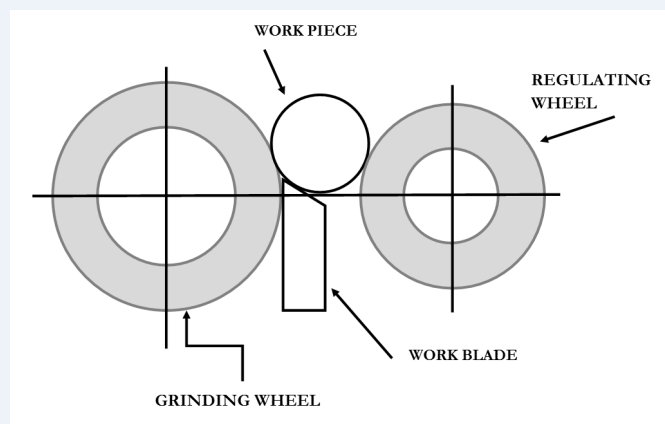
Rubber Bonded Regulating Wheels

atto Rubber Bonded Regulating Wheels are manufactured in a calandaring process for optimum performance.



Specials

- Wheels with steel cores for Glebar and Royal Master machines available
- Wheels for special grinding operations



Applications

Centreless Grinding of:

Bars	Balls	Bearings
Fasteners	Medical Wires	Valves
Rotors	Tubes	Needles

Centreless Work Wheels

atto Rubber Bonded Centreless Work Wheels are available in various specifications to suit the material being ground, stock removal rates and the required finish.

Availability

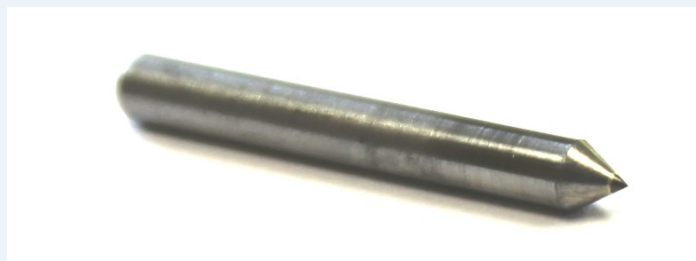
Common Grit Sizes:	54 to 400
Grades:	K, L, M, N, Q
Bonds:	Rubber and Resin
Grit Types:	A, WA, WAA, C and CA

Benefits

- ◆ No burning
- ◆ Superior finishes
- ◆ High stock removal
- ◆ Less dressing
- ◆ Reduced costs
- ◆ Consistent grade qualities throughout the wheel.

Diamond Dressing Tools

Complete the perfect Centreless Grinding operation with quality diamond dressers.



Specifications

Grit Sizes:	46, 60, 80, 120, 150, 180
Standard Grade:	A80-RR Harder and softer grades upon request
Wheel Sizes:	Complete range of sizes, including non-standard (e.g. slotted) and special sizes
Recesses:	Full range of recesses (metric and imperial)
Special machining available	

Wheels suitable for in-feed, end-feed and through-feed applications.



Features

- ◆ Consistency
- ◆ Versatility
- ◆ Improved Gripping Power
- ◆ Longer Wheel Life
- ◆ Superior Performance



12 inch Regulating Feed Wheel

Rubber Bonded Regulating Wheel

- Size: 12 x 1 x 5 inches
- Specification: A80-R-R
- Type 1.
- Suitable for in-feed, end-feed and through-feed applications

Description

atto abrasives Centerless grinding wheels are manufactured through a calendering process, and are mounted and balanced. This allows for optimum performance. The atto abrasives Rubber Bonded Regulating Feed Wheels are suitable for in-feed, end-feed and through-feed applications, and provide:

- Consistency
- Versatility
- Improved Gripping Power
- Longer Wheel Life

- Superior Performance

Wheel Diameter (Inches)	12
Wheel Width (Inches)	1
Hole Size (Inches)	5
Wheel Type	Type 1.
Recess Type	No Recess
Specification	A80-R-R
Abrasive Type	Aluminum Oxide
Grit	80



12Inch Regulating Feed Wheel

Rubber Bonded Regulating Wheel

- Size: 12" x 2" x 5"
- Type 1. (No Recess)
- Specification: A80-R-R
- Suitable for in-feed, end-feed and through-feed applications
- **Further sizes and specifications available upon request [here](#).**

Description

atto abrasives Centerless grinding wheels are manufactured through a calendering process, and are mounted and balanced. This allows for optimum performance. The atto abrasives Rubber Bonded Regulating Feed Wheels are suitable for in-feed, end-feed and through-feed applications, and provide:

- Consistency
- Versatility

- Improved Gripping Power
- Longer Wheel Life
- Superior Performance

Wheel Diameter (Inches)	12
Wheel Width (Inches)	2
Hole Size (Inches)	5
Wheel Type	Type 1.
Recess Type	No Recess
Specification	A80-R-R
Abrasive Type	Aluminum Oxide
Grit	80



6 Inch Regulating Feed Wheels

Rubber Bonded Regulating Wheel

- Size: 6 x 3 x 1-1/2
- Type 1. (No Recess)
- Specification: A80-R-R
- Suitable for in-feed, end-feed and through-feed applications
- **Further sizes and specifications available upon request [here](#).**

Description

atto abrasives Regulating Feed Wheels (also known as control wheels) are manufactured in a calendering process and are mounted and balanced for optimum performance. These regulating wheels are suitable for in-feed, end-feed and through-feed centerless grinding applications, and provide:

- Consistency
- Improved Gripping Power

- Longer Wheel Life
- Superior Performance

Wheel Diameter (Inches)	6"
Wheel Width (Inches)	3"
Hole Size (Inches)	1-1/2"
Wheel Type	Type 1.
Recess Type	No Recess
Specification	A80-R-R
Abrasive Type	Aluminum Oxide
Grit	80



9 inch Regulating Wheel

Regulating Feed Wheel

- Size: 9" x 4" x 4"
- Type 1.
- Specification: A80-R-R
- Suitable for in-feed, end-feed and through-feed applications
- **Further sizes and specifications available upon request [here](#).**

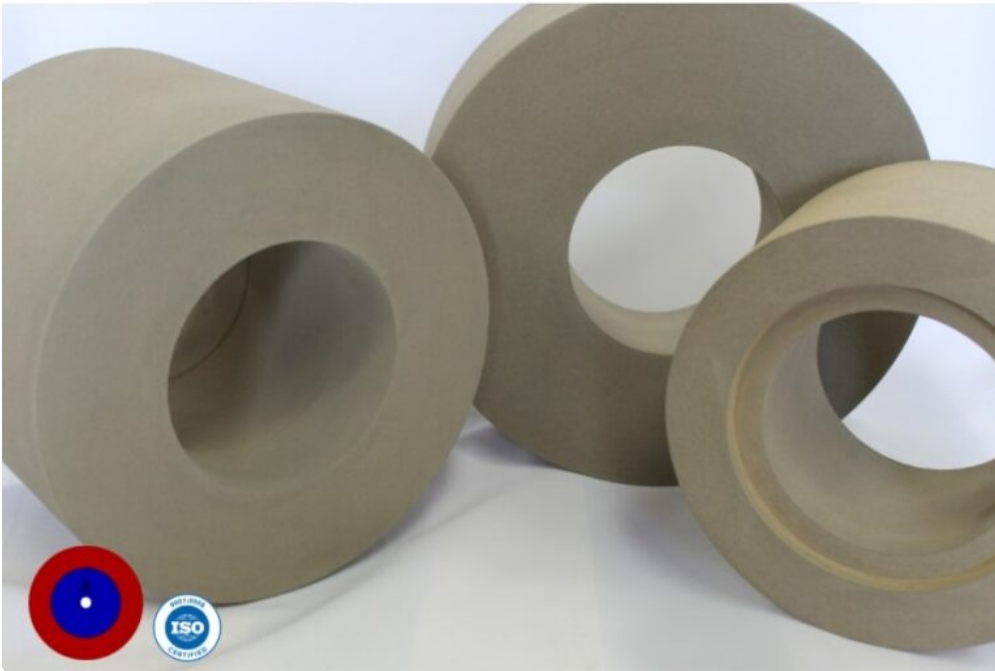
Description

At åtto Abrasives we manufacture a range of Regulating Feed Wheels to compliment any centerless grinding wheel.

The åtto abrasives Rubber Bonded Regulating Feed Wheels are suitable for in-feed, end-feed and through-feed applications, and provide:

- Consistency
- Versatility
- Improved Gripping Power
- Longer Wheel Life
- Superior Performance

Wheel Diameter (Inches)	9"
Wheel Width (Inches)	4"
Hole Size (Inches)	4"
Wheel Type	Type 1.
Abrasive Material	Aluminum Oxide
Grit	80
Recess Depth (Inches)	None
Recess Diameter (Inches)	None
Wheel Hardness	R
Bond Type	Rubber
Specification	A80-R-R
Maximum RPM	800
Wheel Hardness Rating	Hard



9 Inch Regulating Feed Wheel

Regulating Feed Wheel

- Size: 9" x 4" x 4"
- Type 7 wheel Recess Both Sides 5-1/2" x 5/8"
- Specification: A80-R-R
- Suitable for in-feed, end-feed and through-feed applications
- **Further sizes and specifications available upon request [here](#).**

Description

At atto Abrasives we manufacture a range of Regulating Feed Wheels to compliment any centerless grinding wheel.

Our range includes;

- Centerless grinding Work Wheels: available in rubber & cork specifications for Grinding &

Polishing Applications

- Centerless grinding Regulating (Control) Wheels: to control the rotation of the workpiece
- Cored Centerless Work Wheels

atto abrasives Centerless grinding wheels are manufactured through a calendering process, and are mounted and balanced. This allows for optimum performance. They are available in various specifications, with custom recesses possible. In addition the atto abrasives Rubber Bonded Regulating Feed Wheels are suitable for in-feed, end-feed and through-feed applications, and provide:

- Consistency
- Versatility
- Improved Gripping Power
- Longer Wheel Life
- Superior Performance

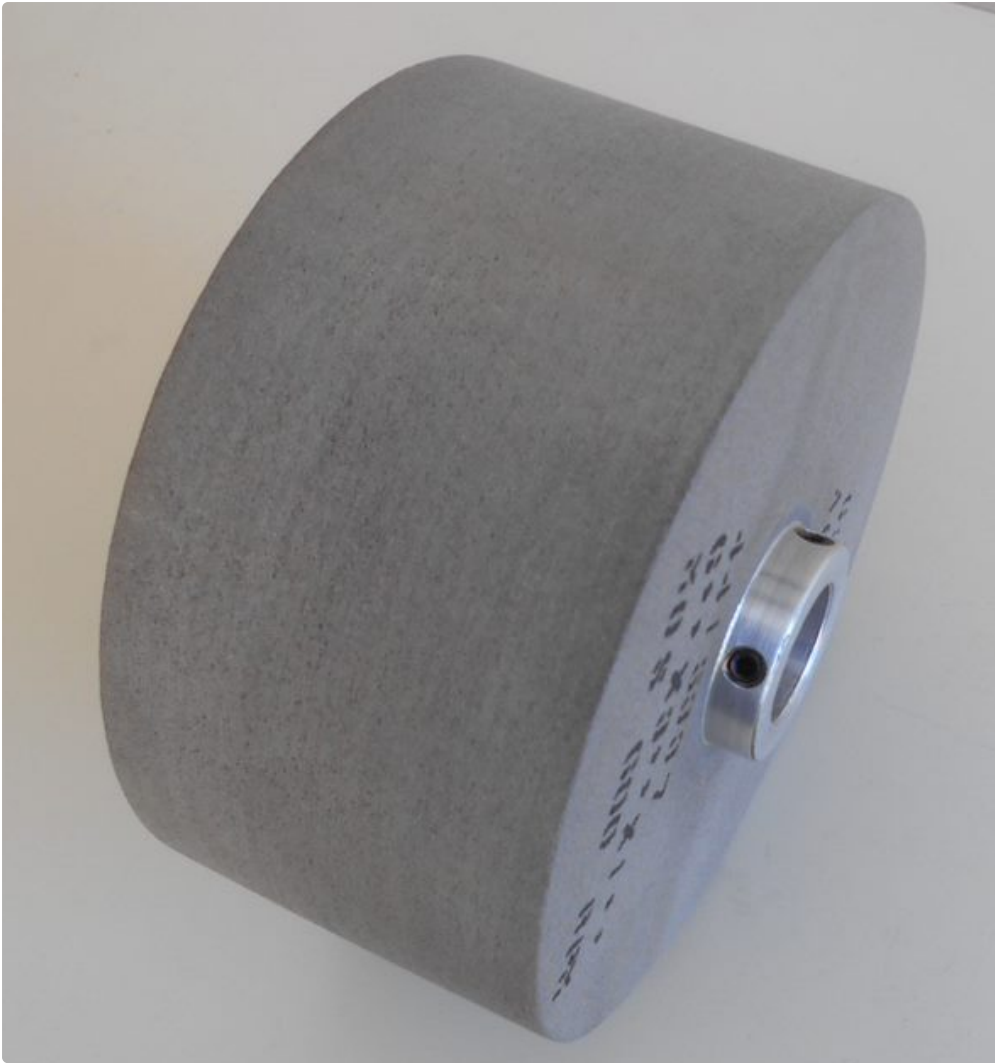
Wheel Diameter (Inches)	9"
Wheel Width (Inches)	4"
Hole Size (Inches)	4"
Wheel Type	Type 7.
Abrasive Material	Aluminum Oxide
Grit	80
Recess Depth (Inches)	5-1/2"
Recess Diameter (Inches)	5/8"
Wheel Hardness	R
Bond Type	Rubber
Opposite Side Recess Depth (Inches)	5-1/2"

Opposite Site Recess Diameter (Inches) **5/8"**

Specification **A80-R-R**

Maximum RPM **800**

Wheel Hardness Rating **Hard**



Cored Regulating Wheel (6" x 3")

Rubber Bonded Regulating Wheel

- Size: 6" x 3"
- Size: 152.4 x 76.2mm
- Specification: A80-R-R
- atto Abrasives Rubber Bonded Grinding & Polishing wheel with core MSDS 2019
- Suitable for in-feed, end-feed and through-feed applications

Description

These cored regulating wheels are a part of our atto Abrasives centerless grinding range.

åtto Abrasives is a long-established manufacturer of cored regulating wheels for centerless grinding applications. Our range includes;

- Centerless grinding Work Wheels: available in rubber & cork specifications for Grinding & Polishing Applications
- Centerless grinding Regulating (Control) Wheels: to control the rotation of the workpiece
- Cored Centerless Work Wheels

These regulating & work wheels are custom manufactured to meet the unique centerless grinding requirements of our customers. The centerless grinding process is ideally suited to applications requiring high production rates of cylindrical components. These include manufacturing, taper roller bearings, chrome bar, shafts, tubing, etc. Centreless grinding has evolved to include, thru-feed, in-feed and end-feed centreless grinding & polishing.

The åtto abrasives range of centerless grinding products are manufactured in a calendaring process in order to achieve optimum performance levels. These regulating wheels are available in various specifications to suit the material being worked and to provide the required finish.

They are suitable for in-feed, end-feed and through-feed applications, and provide:

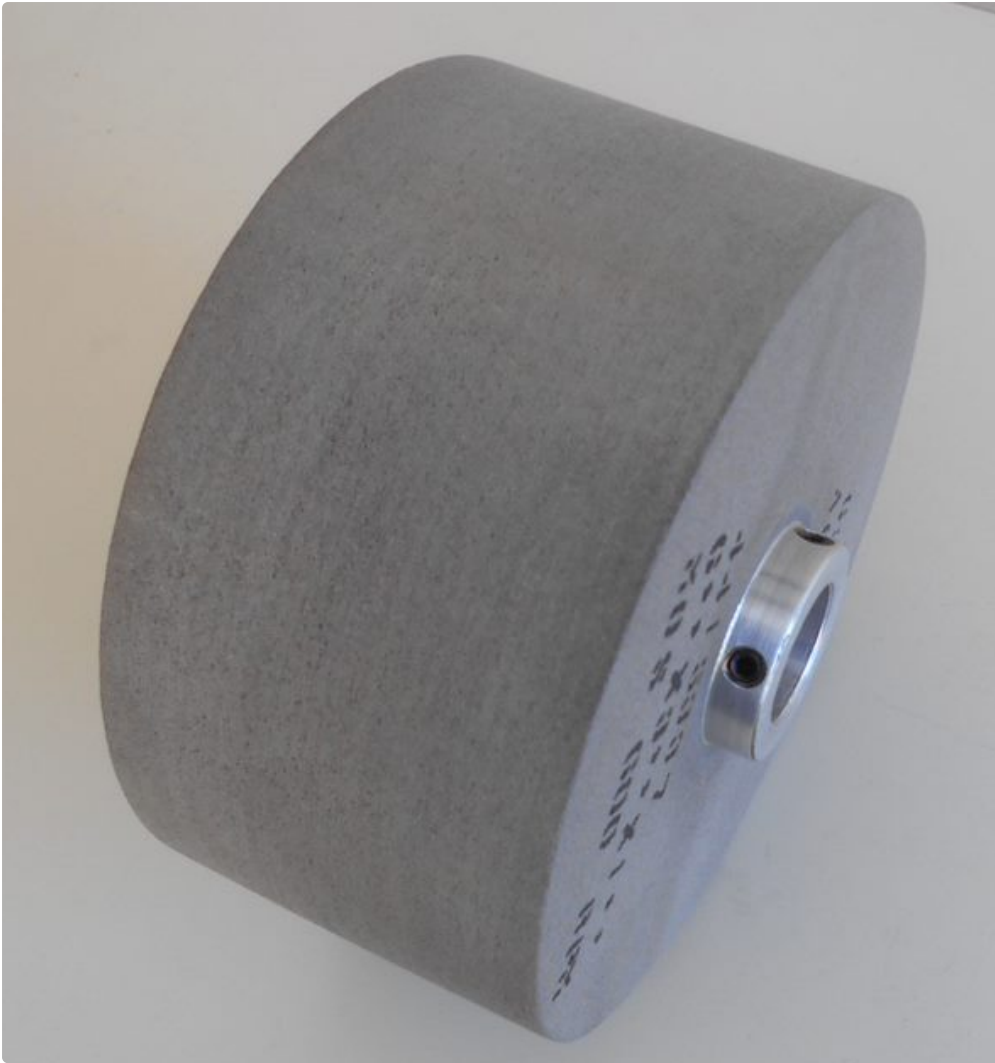
- Consistency
- Versatility
- Improved Gripping Power
- Longer Wheel Life
- Superior Performance

Non-standard (e.g. slotted) & special sizes routinely manufactured

- **Regulating wheels with steel cores for Glebar & Royal Master machines are available upon request.**
- åtto abrasives products can be custom manufactured for special grinding operations, just send us your requirements to the email address below or fill out our request quotation form here.

Specifications

- Customized specifications are available for infeed, end-feed & through-feed applications depending on your requirements.
- **Complete range of specifications including standard specifications with abrasive grit sizes (80, 120 and 180) are available. It is important to get the correct abrasive for your requirement.**
- Here at åtto abrasives we can tailor our products to suit any particular need & application.



Speciality Regulating wheels (6" x 4")

Rubber Bonded Regulating Wheel

- Size: 6" x 4"
- Size: 152.4 x 101.6 mm
- Specification: A80-R-R
- atto Abrasives Rubber Bonded Grinding & Polishing wheel with core MSDS Safety data sheet 2019
- Suitable for in-feed, end-feed and through-feed applications

Description

These cored regulating wheels are a part of our centerless grinding range.

atto Abrasives is a long-established manufacturer of regulating wheels for centerless grinding

applications. Our range includes;

- Centerless grinding Work Wheels: available in rubber & cork specifications for Grinding & Polishing Applications
- Centerless grinding Regulating (Control) Wheels: to control the rotation of the workpiece
- Cored Centerless Work Wheels

These regulating & work wheels are custom manufactured to meet the unique centerless grinding requirements of you our customer. The centerless grinding process is ideally suited to applications requiring high production rates of cylindrical components. These include manufacturing, taper roller bearings, chrome bar, shafts, tubing, etc. Centreless grinding has evolved to include, thru- feed, in-feed and end-feed centreless grinding & polishing.

These atto Centerless Wheels are ready for you to use straight away. They are manufactured in a calendering process, mounted and balanced in order to achieve optimum performance levels. These regulating wheels are available in various specifications which allow you to receive the specification most suited to the material you are working with.

They are suitable for in-feed, end-feed and through-feed applications, and provide:

- Consistency
- Versatility
- Improved Gripping Power
- Longer Wheel Life
- Superior Performance

Non-standard (e.g. slotted) & special sizes routinely manufactured

- **Regulating wheels with steel cores for Glebar & Royal Master machines are available upon request.**
- atto abrasives products can be custom manufactured for special grinding operations. Send us your requirements to the email address below or fill out our request quotation form here.

Specifications

- Customized specifications are available for infeed, end-feed & through-feed applications depending on your requirements.
- **A complete range of specifications including standard specifications with abrasive grit sizes (80, 120 and 180) are available. It is important to get the correct abrasive for your requirement.**
- Here at atto abrasives we can tailor our products to suit any particular need & application.



12Inch Regulating Feed Wheel

Rubber Bonded Regulating Wheel

- Size: 12" x 4" x 5"
- Type 1. (No Recess)
- Specification: A80-R-R
- Suitable for in-feed, end-feed and through-feed applications
- **Further sizes and specifications available upon request [here](#).**

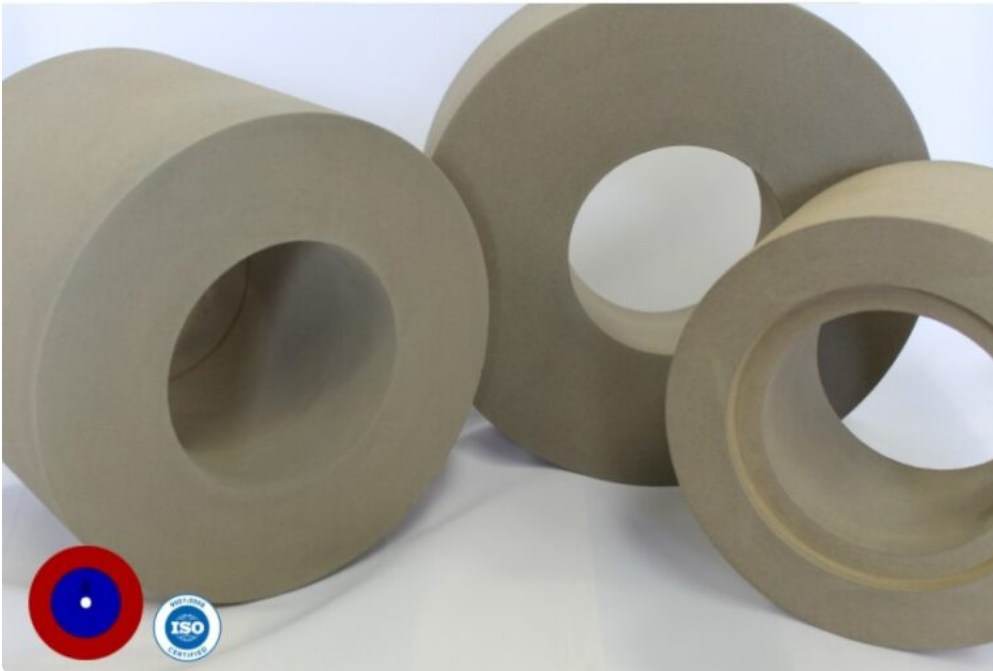
Description

atto abrasives Centerless grinding wheels are manufactured through a calendering process, and are mounted and balanced. This allows for optimum performance. The atto abrasives Rubber Bonded Regulating Feed Wheels are suitable for in-feed, end-feed and through-feed applications, and provide:

- Consistency
- Versatility

- Improved Gripping Power
- Longer Wheel Life
- Superior Performance

Wheel Diameter (Inches)	12
Wheel Width (Inches)	4
Hole Size (Inches)	5
Wheel Type	Type 1.
Recess Type	No Recess
Specification	A80-R-R
Abrasive Type	Aluminum Oxide
Grit	80



12 Inch Regulating Control Wheels

Rubber Bonded Regulating Wheel

- Size: 12" x 4" x 5"
- Specification: A80-R-R
- Suitable for in-feed, end-feed and through-feed applications
- **Further sizes and specifications available upon request [here](#).**

Description

At atto Abrasives we manufacture a range of Regulating Feed Wheels to compliment any centerless grinding wheel.

We provide an extensive range of rubber bonded Centerless Grinding/ Work and Regulating Feed Wheels. Our range includes;

- Centerless grinding Work Wheels: available in rubber & cork specifications for Grinding &

Polishing Applications

- Centerless grinding Regulating (Feed) Wheels: to control the rotation of the workpiece
- Cored Centerless Work Wheels
- Slotted Regulating wheels for fastener production

atto abrasives Centerless grinding wheels are manufactured through a calendaring process, and are mounted and balanced. This allows for optimum performance. They are available in various specifications, with custom recesses possible. In addition the atto abrasives Rubber Bonded Regulating Feed Wheels are suitable for in-feed, end-feed and through-feed applications, and provide:

- Consistency
- Versatility
- Improved Gripping Power
- Longer Wheel Life
- Superior Performance

Wheel Diameter (Inches)	12"
Wheel Width (Inches)	4"
Hole Size (Inches)	5"
Wheel Type	Type 7.
Abrasive Material	Aluminum Oxide
Grit	80
Recess Depth (Inches)	7-1/2"
Recess Diameter (Inches)	1/2"
Wheel Hardness	R
Bond Type	Rubber

Opposite Side Recess Depth (Inches)	7-1/2"
-------------------------------------	--------

Opposite Site Recess Diameter (Inches)	1/2"
--	------

Specification	A80-R-R
---------------	---------

Maximum RPM	800
-------------	-----

Wheel Hardness Rating	Hard
-----------------------	------



12 Inch Regulating Wheels

Rubber Bonded Regulating Wheel

- Size: 12" x 6" x 5"
- Specification: A80-R-R
- Type 1
- Åtto abrasives Rubber Bonded Regulating Wheel
- Suitable for in-feed, end-feed and through-feed applications

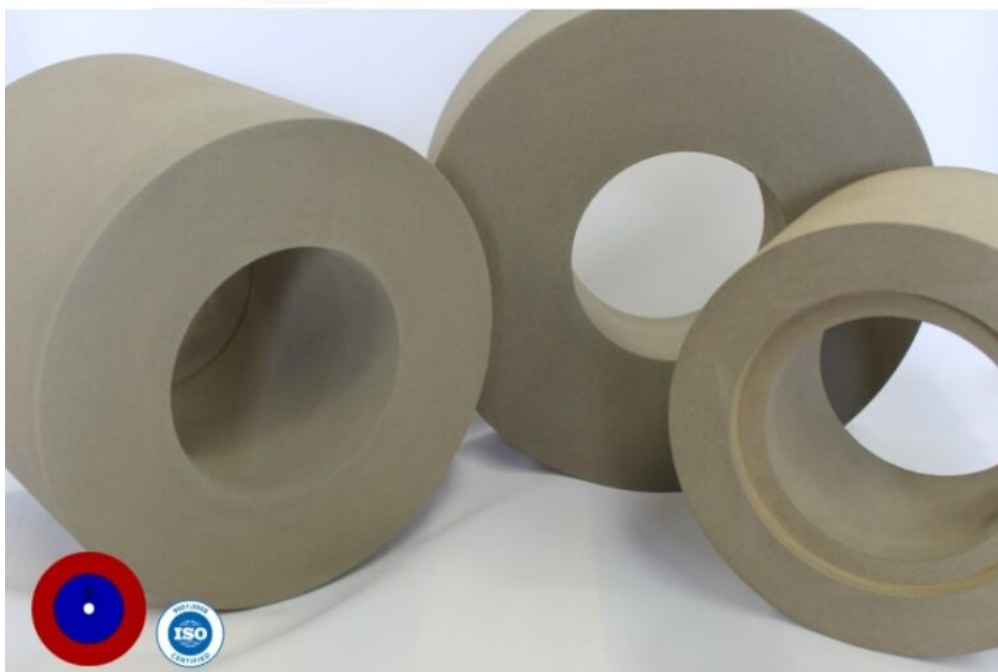
Description

Åtto abrasives Centerless grinding wheels are manufactured through a calendering process, and are mounted and balanced. This allows for optimum performance. The Åtto abrasives Rubber Bonded Regulating Feed Wheels are suitable for in-feed, end-feed and through-feed applications, and provide:

- Consistency
- Versatility
- Improved Gripping Power

- Longer Wheel Life
- Superior Performance

Wheel Diameter (Inches)	12
Wheel Width (Inches)	6
Hole Size (Inches)	5
Wheel Type	Type 1.
Recess Type	No Recess
Specification	A80-R-R
Abrasive Type	Aluminum Oxide
Grit	80



14 Inch Regulating Feed wheel

Rubber Bonded Regulating Wheel

- Size: 14" x 8" x 5"
- Type 7 (Recess Both Sides)
- Specification: A80-R-R
- Suitable for in-feed, end-feed and through-feed applications

Description

atto Abrasives Rubber-Bonded Feed / Regulating wheel.

This atto Rubber Bonded Regulating Wheel is part of the atto abrasives centerless range. atto Abrasives is a long-established manufacturer of abrasive wheels for centreless grinding applications.

The centreless grinding process is ideally suited to applications requiring high production rates of cylindrical components. These applications include manufacturing: taper roller bearings, chrome bar, shafts, tubing, etc. Centreless grinding has evolved to include, thru- feed, in-feed and end-feed centreless grinding & polishing.

atto abrasives range of centerless grinding products provide:

- Consistency
- Versatility
- Improved Gripping Power
- Longer Wheel Life
- Superior Performance

Non-standard (e.g. slotted) & special sizes are routinely manufactured

Wheel Diameter (Inches)	14"
Wheel Width (Inches)	8"
Hole Size (Inches)	5"
Wheel Type	Type 7.
Abrasive Material	Aluminum Oxide
Grit	80
Recess Depth (Inches)	8"
Recess Diameter (Inches)	1-1/2"
Wheel Hardness	R
Bond Type	Rubber
Opposite Side Recess Depth (Inches)	8"
Opposite Site Recess Diameter (Inches)	2"
Specification	A80-R-R

Maximum RPM	800
-------------	-----

Wheel Hardness Rating	Hard
-----------------------	------



12 Inch Regulating Feed wheels

Rubber Bonded Regulating Wheel

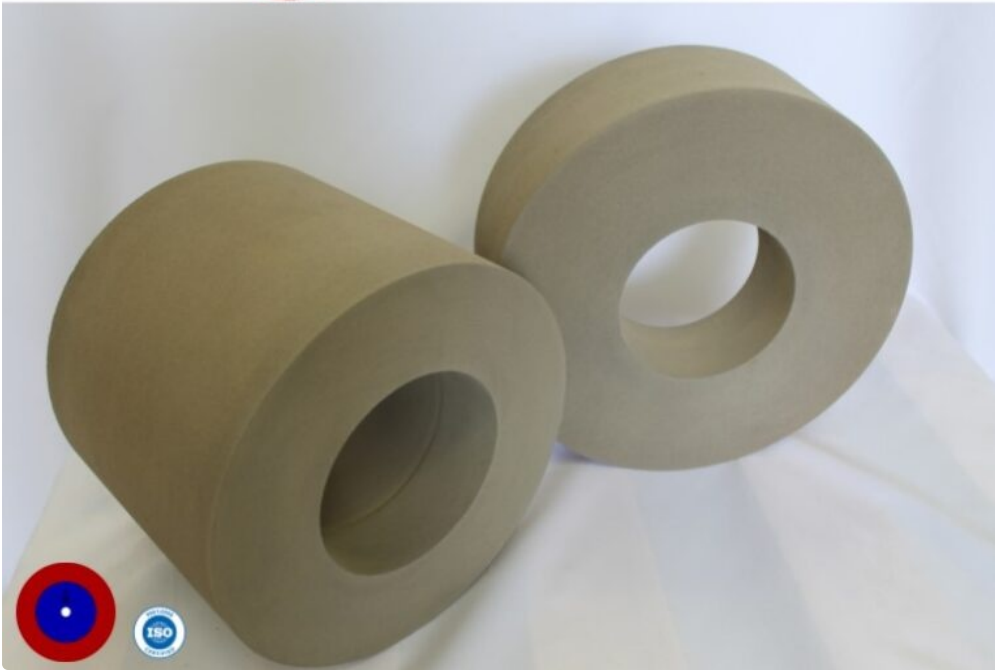
- Size: 12" x 6" x 5"
- Specification: A80-R-R
- Suitable for in-feed, end-feed and through-feed applications
- Further sizes, recesses and specifications available upon request

Description

Wheel Diameter (Inches)

12"

Wheel Width (Inches)	6"
Hole Size (Inches)	5"
Wheel Type	Type 7.
Abrasive Material	Aluminum Oxide
Grit	80
Recess Depth (Inches)	7-1/2"
Recess Diameter (Inches)	1-1/2"
Wheel Hardness	R
Bond Type	Rubber
Opposite Side Recess Depth (Inches)	7-1/2"
Opposite Site Recess Diameter (Inches)	1-1/2"
Specification	A80-R-R
Maximum RPM	800
Wheel Hardness Rating	Hard



12 Inch Regulating Control Wheels

Rubber Bonded Regulating Wheel

- Size: 12 x 8 x 5
- Specification: A80-R-R
- Type 1.
- Suitable for in-feed, end-feed and through-feed applications
- **Further sizes and specifications available upon request**

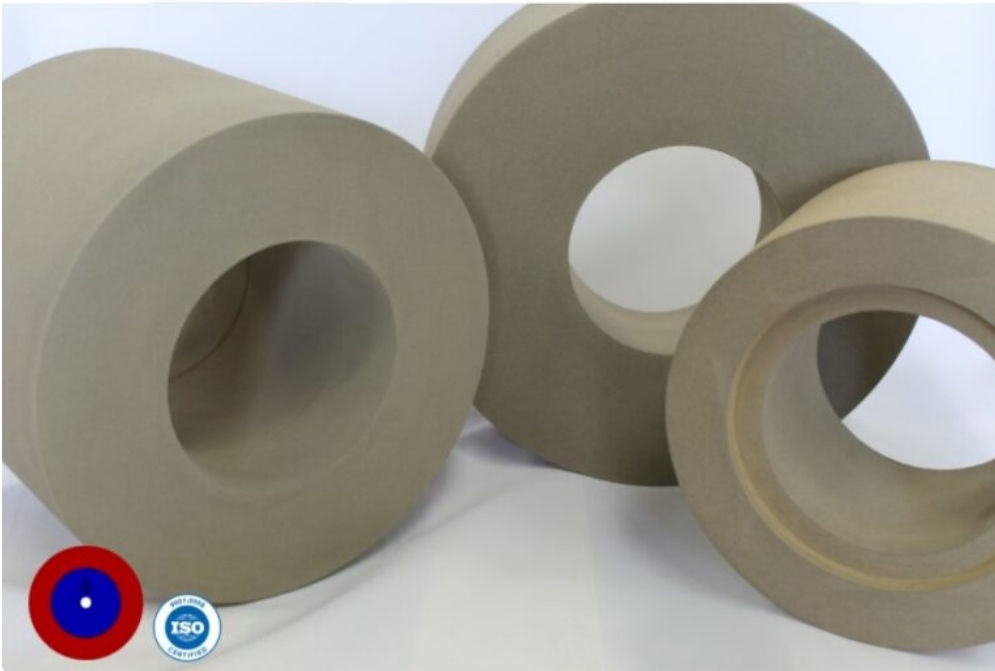
Description

atto abrasives Centerless grinding wheels are manufactured through a calendering process, and are mounted and balanced. This allows for optimum performance. The atto abrasives Rubber Bonded Regulating Feed Wheels are suitable for in-feed, end-feed and through-feed applications, and provide:

- Consistency
- Versatility

- Improved Gripping Power
- Longer Wheel Life
- Superior Performance

Wheel Diameter (Inches)	12
Wheel Width (Inches)	8
Hole Size (Inches)	5
Wheel Type	Type 1.
Recess Type	No Recess
Specification	A80-R-R
Abrasive Type	Aluminum Oxide
Grit	80



12 Inch Regulating Feed Wheel

Rubber Bonded Regulating Wheel

- Size: 12" x 8" x 5"
- Specification: A80-R-R
- Suitable for in-feed, end-feed and through-feed applications

Description

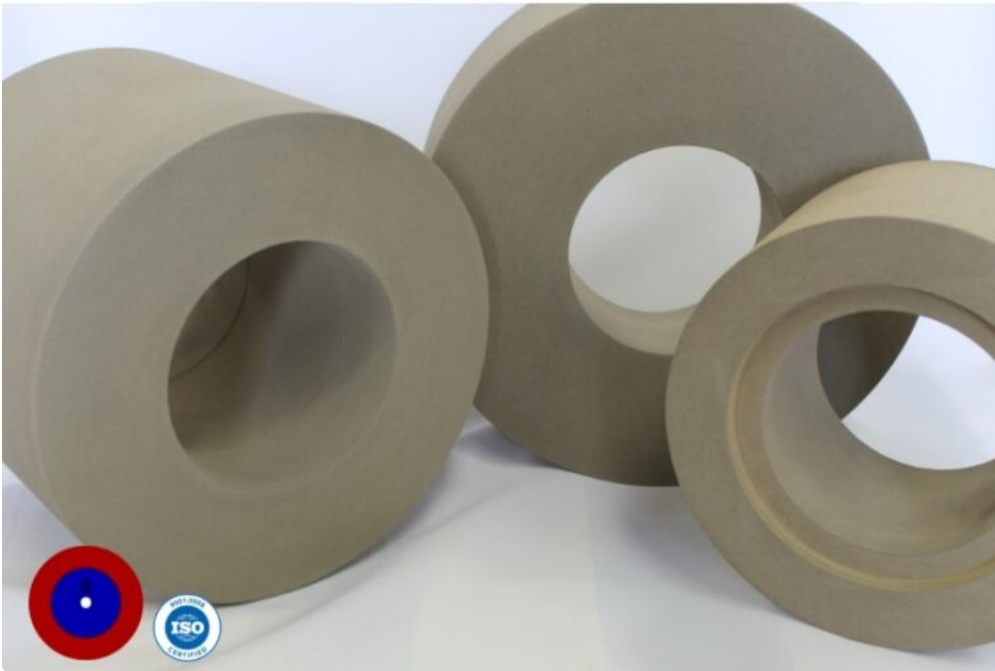
At åtto Abrasives we manufacture a range of Regulating Feed Wheels to compliment any centerless grinding wheel.

åtto abrasives Centerless grinding wheels are manufactured through a calendering process, and are mounted and balanced. This allows for optimum performance. They are available in various specifications, with custom recesses possible. In addition the åtto abrasives Rubber Bonded Regulating Feed Wheels are suitable for in-feed, end-feed and through-feed applications, and provide:

- Consistency

- Versatility
- Improved Gripping Power
- Longer Wheel Life
- Superior Performance

Wheel Diameter (Inches)	12"
Wheel Width (Inches)	8"
Hole Size (Inches)	5"
Wheel Type	Type 7.
Abrasive Material	Aluminum Oxide
Grit	80
Recess Depth (Inches)	7-1/2"
Recess Diameter (Inches)	1-1/2"
Wheel Hardness	R
Bond Type	Rubber
Opposite Side Recess Depth (Inches)	7-1/2"
Opposite Site Recess Diameter (Inches)	1-1/2"
Specification	A80-R-R
Maximum RPM	800
Wheel Hardness Rating	Hard



14 Inch Regulating Control Wheels

Rubber Bonded Regulating Wheel

- Size: 14" x 20" x 6"
- Specification: A80-R-R
- Type 7
- Suitable for in-feed, end-feed and through-feed applications

Description

åtto Abrasives Rubber-Bonded Feed / Regulating wheel.

åtto abrasives range of centerless grinding products provide:

- Consistency
- Versatility
- Improved Gripping Power
- Longer Wheel Life
- Superior Performance

Non-standard (e.g. slotted) & special sizes are routinely manufactured

Wheel Diameter (Inches)	14"
Wheel Width (Inches)	20"
Hole Size (Inches)	6"
Wheel Type	Type 7.
Abrasive Material	Aluminum Oxide
Grit	80
Recess Depth (Inches)	8-7/8"
Recess Diameter (Inches)	1-1/2"
Wheel Hardness	R
Bond Type	Rubber
Opposite Side Recess Depth (Inches)	8-7/8"
Opposite Site Recess Diameter (Inches)	1-1/2"
Specification	A80-R-R
Maximum RPM	800
Wheel Hardness Rating	Hard

По вопросам продаж и поддержки обращайтесь:

Алматы (7273)495-231
Архангельск (8182)63-90-72
Астрахань (8512)99-46-04
Барнаул (3852)73-04-60
Белгород (4722)40-23-64
Брянск (4832)59-03-52
Владивосток (423)249-28-31
Волгоград (844)278-03-48
Вологда (8172)26-41-59
Воронеж (473)204-51-73
Екатеринбург (343)384-55-89
Иваново (4932)77-34-06
Ижевск (3412)26-03-58
Иркутск (395)279-98-46
Россия (495)268-04-70

Казань (843)206-01-48
Калининград (4012)72-03-81
Калуга (4842)92-23-67
Кемерово (3842)65-04-62
Киров (8332)68-02-04
Краснодар (861)203-40-90
Красноярск (391)204-63-61
Курск (4712)77-13-04
Липецк (4742)52-20-81
Магнитогорск (3519)55-03-13
Москва (495)268-04-70
Мурманск (8152)59-64-93
Набережные Челны (8552)20-53-41
Нижний Новгород (831)429-08-12
Киргизия (996)312-96-26-47

Новокузнецк (3843)20-46-81
Новосибирск (383)227-86-73
Омск (3812)21-46-40
Орел (4862)44-53-42
Оренбург (3532)37-68-04
Пенза (8412)22-31-16
Пермь (342)205-81-47
Ростов-на-Дону (863)308-18-15
Рязань (4912)46-61-64
Самара (846)206-03-16
Санкт-Петербург (812)309-46-40
Саратов (845)249-38-78
Севастополь (8692)22-31-93
Симферополь (3652)67-13-56
Казахстан (7172)727-132

Смоленск (4812)29-41-54
Сочи (862)225-72-31
Ставрополь (8652)20-65-13
Сургут (3462)77-98-35
Тверь (4822)63-31-35
Томск (3822)98-41-53
Тула (4872)74-02-29
Тюмень (3452)66-21-18
Ульяновск (8422)24-23-59
Уфа (347)229-48-12
Хабаровск (4212)92-98-04
Челябинск (351)202-03-61
Череповец (8202)49-02-64
Ярославль (4852)69-52-93