

Технические характеристики

По вопросам продаж и поддержки обращайтесь:

Алматы (7273)495-231	Казань (843)206-01-48	Новокузнецк (3843)20-46-81	Смоленск (4812)29-41-54
Архангельск (8182)63-90-72	Калининград (4012)72-03-81	Новосибирск (383)227-86-73	Сочи (862)225-72-31
Астрахань (8512)99-46-04	Калуга (4842)92-23-67	Омск (3812)21-46-40	Ставрополь (8652)20-65-13
Барнаул (3852)73-04-60	Кемерово (3842)65-04-62	Орел (4862)44-53-42	Сургут (3462)77-98-35
Белгород (4722)40-23-64	Киров (8332)68-02-04	Оренбург (3532)37-68-04	Тверь (4822)63-31-35
Брянск (4832)59-03-52	Краснодар (861)203-40-90	Пенза (8412)22-31-16	Томск (3822)98-41-53
Владивосток (423)249-28-31	Красноярск (391)204-63-61	Пермь (342)205-81-47	Тула (4872)74-02-29
Волгоград (844)278-03-48	Курск (4712)77-13-04	Ростов-на-Дону (863)308-18-15	Тюмень (3452)66-21-18
Вологда (8172)26-41-59	Липецк (4742)52-20-81	Рязань (4912)46-61-64	Ульяновск (8422)24-23-59
Воронеж (473)204-51-73	Магнитогорск (3519)55-03-13	Самара (846)206-03-16	Уфа (347)229-48-12
Екатеринбург (343)384-55-89	Москва (495)268-04-70	Санкт-Петербург (812)309-46-40	Хабаровск (4212)92-98-04
Иваново (4932)77-34-06	Мурманск (8152)59-64-93	Саратов (845)249-38-78	Челябинск (351)202-03-61
Ижевск (3412)26-03-58	Набережные Челны (8552)20-53-41	Севастополь (8692)22-31-93	Череповец (8202)49-02-64
Иркутск (395)279-98-46	Нижний Новгород (831)429-08-12	Симферополь (3652)67-13-56	Ярославль (4852)69-52-93
Россия (495)268-04-70	Киргизия (996)312-96-26-47	Казахстан (7172)727-132	

Rubber Bonded Polishing wheels

The atto standard range of rubber bonded polishing wheels are offered in diameters up to 508 mm / 20"

- Available in reinforced & non reinforced forms
- Including Rigid, Semi- flexible & Flexible bonds
- Customised sizes, shapes & formulations upon request
- Special faces & slots available on request

Benefits Include:

- Grades available for all metallic types
- Superior finish
- Cost effective
- Composite wheels , with capacity to grind & polish in a single pass

Cylindrical Rubber Bonded Wheels

Atto Cylindrical wheels are made with a rubber bond that yields a high-quality finish, and can be used for polishing and grinding. Available in type-1 and type-2 shapes to suit most cutlery grinding machines.

Atto Cylindrical wheels are used for the polishing & grinding of: Pocket knives, Scissors, Professional knives, Surgical blades, etc.

Sizes & Specifications

Available in a full range of sizes up to 500mm in diameter.

Available in Soft, Medium & Hard bonds in a wide range of grit sizes and designations. Custom formulated to meet your requirements.

åtto abrasives Polymer Bonded Wheels

Formulated using polymer bonding systems, our wheels can be operated at higher speeds for optimum productivity. Suitable for grinding and polishing, available in dual & multi-zone options for grinding and polishing in a single pass.

- Available in sizes up to diameter 900mm
- Available in shapes Type-1, Type-2 & Cup shape
- Special shapes, mounting systems & grinding face angles can be manufactured.
- Custom formulated for optimum performance.
- Full range of specifications, abrasive grits & designations available to fulfill all requirements.



åtto abrasives Polymer bonded Wheels

åtto abrasives Flute Wheels

åtto Flute Wheels are available in a wide range of bonds, including High-Density for fast cool grinding, longer wheel life and higher quality finishes.

Flexible bonds are available for Flute Polishing where even finer finishes are needed.

Availability

Grit Types:	A, WA. C and Ceramic Grits
Grit Sizes:	46 to 240 (FEPA)
Diameter:	from 100 to 510mm
Thickness:	from 1 to 32 mm
Tolerance:	Standard +/-0.1mm Special on request
Faces:	All standard - special on request
Relief slots:	available
Max Speed:	Up to 80 m/sec

Special Sizes & Shapes available upon request

- Suitable for Fluting. Clearance grinding, Chamfering, Squaring, Polishing and Pointing.
Used for the grinding of Drills, Taps, Reamers, End Mills, etc.

Flute Wheels

The atto Flute Wheel range is suitable for Flute Clearance Grinding, Chamfering, Squaring, Polishing and Pointing.

Features

- ◆ High Density Bonds
- ◆ Quality Finish
- ◆ Close Thickness Tolerances
- ◆ Cooler Grinding
- ◆ High “G” Ratio
- ◆ Slotted and Special Faces

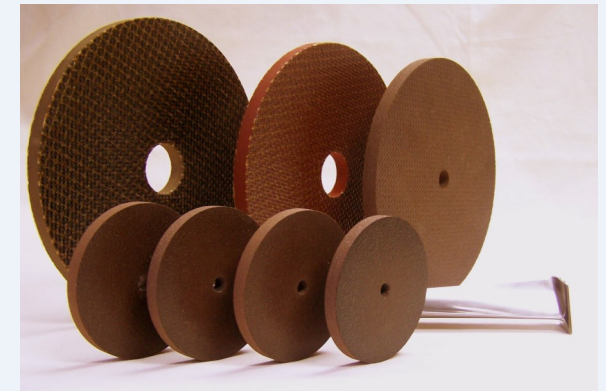


Availability

Grit Types:	A, WA, C and Ceramic Grits
Grit Sizes:	46 to 240 (FEPA)
Diameter:	From 100 to 510mm (4” to 20”)
Thickness:	From 1 to 32mm (0.040” to 1.250”)
Tolerance:	Standard +/-0.1mm (+/-0.004) <i>Special Tolerances on Request</i>
Faces:	All Standard and relief slots <i>Specials on Request</i>
Max Speed:	Up to 80m/sec.

The atto Abrasives product line includes, but is not limited to:

- ⇒ Centreless Regulating Wheels in Rubber and Cork Bond
- ⇒ Centreless Work Wheels
- ⇒ Rubber Bonded Precision Cutting Wheels
- ⇒ Resin Bonded Precision Cutting Wheels
- ⇒ Polymer Bonded Super Finishing Wheels



PRECISION GRINDING WHEELS

**Rubber Bonded Grinding,
Polishing and Flute Wheels**

Rubber Bonded Grinding Wheels

atto Abrasives Grinding Wheels can eliminate one or more intermediate grinding operations. The wheels are suitable for materials such as Stainless Steel, Tungsten or Titanium.



atto Pekay wheels are specified for grinding aerospace components and jet engine blades.

Features

- ◆ Full Range of Sizes
- ◆ Custom Formulated Specifications
- ◆ High Quality Standards
- ◆ Special Shapes and Machining

Availability

Grit Types:	A, WA, RAA, C
Grit Sizes:	46 to 240 (FEPA)
Bonds:	Flexible to Firm
Hardness:	Soft to Hard

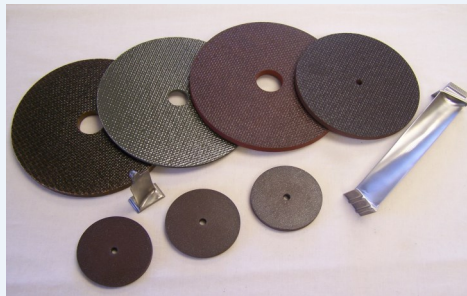
Soft Rubber Slabs, Sticks and Mounted Points

Multi-Application rubber bonded products are also available as slabs, sticks and mounted points.

Sizes: Standard and Special
Sizes Available

Grit Types: A, WA, C and GC

Grit Sizes: 46 to 240 (FEPA)



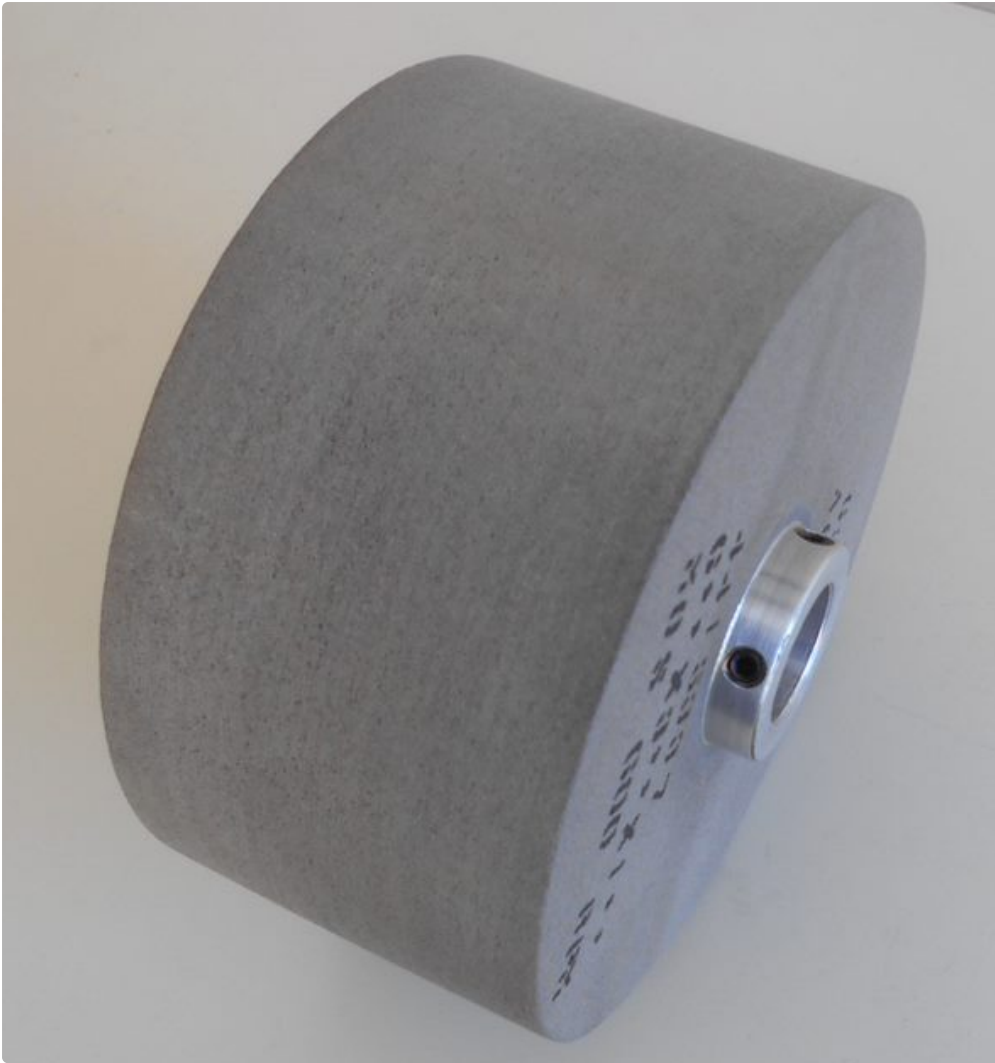
Applications

Suitable for the Production of Stainless Steel, Tungsten or Titanium Finished Parts. Further Applications include:

- Foundry Industry
- Modern Precision Tools including twist drills, reamers and milling cutters
- Aerospace Components
- Engine Blades
- Medical Devices
- Cutlery

Application Guide

Aerospace Components (incl. Turbine Blades)		
Material	Grinding	Polishing
Titanium, Nimonic	A60-M-R95	C80-R-R75
Inconel	A80-M-R95	C80-R-R75
Stainless Steel	A80-M-R95	A100-N-R75
Nickel Alloy	A80-M-R95	A100-N-R75
Tool Room, Manufacturing and Maintenance		
Material	Grinding	Polishing
Flute Clearing	WAA100-W-R100	WAA100-W-R100
Speciality Drills	WA100-P-R105	
Bearing Races	WA100-P-R105	
Twist Drills	A46-M-R757	
HSS Drill Bit & End Mill Sharpening	A240-M-R85	
Weld Blending and De-Burring		
Material	Grinding	Polishing
Braze between Carbide tips and holder	A46-P-R75	
Stainless Steel	A46-K-R90	A60-Q-R75
Cutlery and Hand Tools		
Material	Grinding	Polishing
Knives	RAA120-M-R85	A100-M-R70
Scissors	RAA120-M-R85	
Knife Bolsters	A120-P-R95	
High Carbon Steel	A120-K-R95	
Various		
Material	Grinding	Polishing
Jewellery	A240-L-R85	
Saw Blanks		A60-K-R90
Glass Edging	A180-N-R70	



Speciality Regulating wheels (6" x 4")

Rubber Bonded Regulating Wheel

- Size: 6" x 4"
- Size: 152.4 x 101.6 mm
- Specification: A80-R-R
- atto Abrasives Rubber Bonded Grinding & Polishing wheel with core MSDS Safety data sheet 2019
- Suitable for in-feed, end-feed and through-feed applications

Description

These cored regulating wheels are a part of our centerless grinding range.

atto Abrasives is a long-established manufacturer of regulating wheels for centerless grinding

applications. Our range includes;

- Centerless grinding Work Wheels: available in rubber & cork specifications for Grinding & Polishing Applications
- Centerless grinding Regulating (Control) Wheels: to control the rotation of the workpiece
- Cored Centerless Work Wheels

These regulating & work wheels are custom manufactured to meet the unique centerless grinding requirements of you our customer. The centerless grinding process is ideally suited to applications requiring high production rates of cylindrical components. These include manufacturing, taper roller bearings, chrome bar, shafts, tubing, etc. Centreless grinding has evolved to include, thru- feed, in-feed and end-feed centreless grinding & polishing.

These atto Centerless Wheels are ready for you to use straight away. They are manufactured in a calendering process, mounted and balanced in order to achieve optimum performance levels. These regulating wheels are available in various specifications which allow you to receive the specification most suited to the material you are working with.

They are suitable for in-feed, end-feed and through-feed applications, and provide:

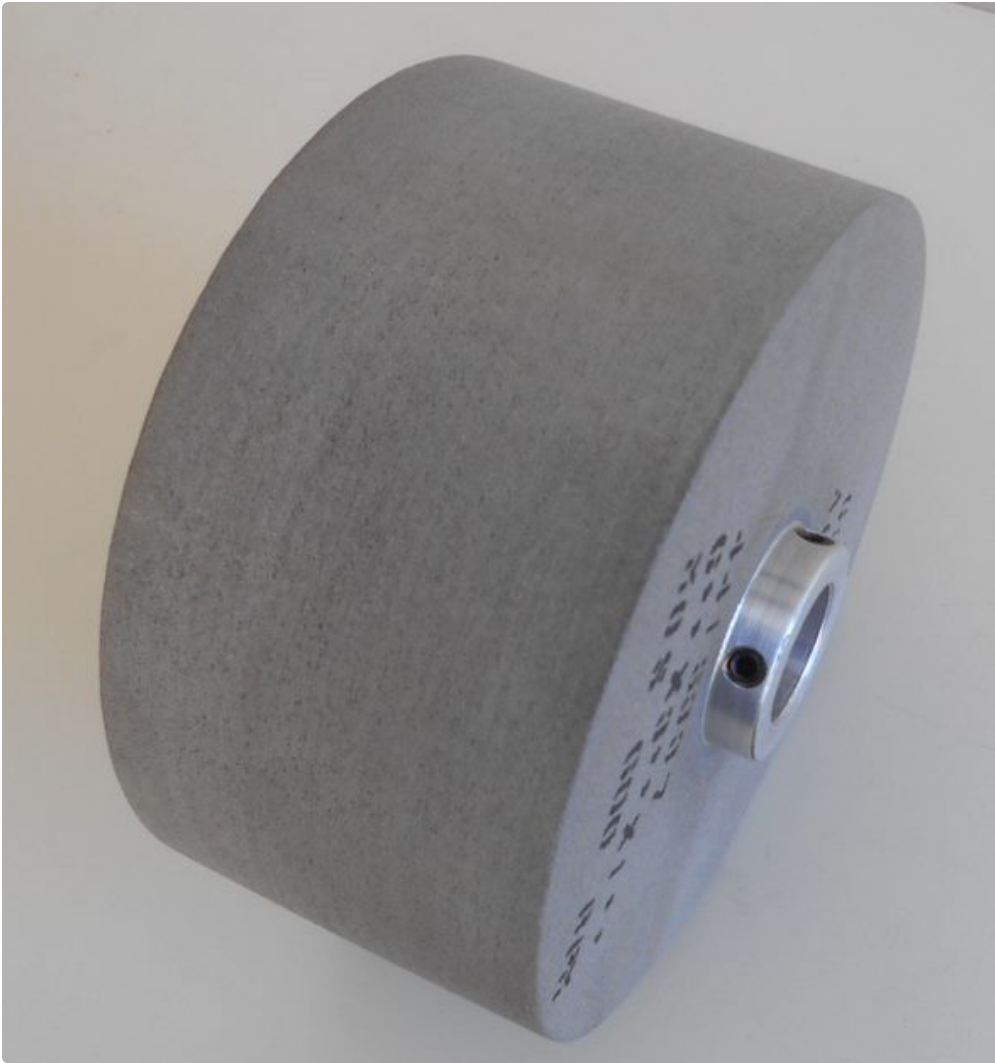
- Consistency
- Versatility
- Improved Gripping Power
- Longer Wheel Life
- Superior Performance

Non-standard (e.g. slotted) & special sizes routinely manufactured

- **Regulating wheels with steel cores for Glebar & Royal Master machines are available upon request.**
- atto abrasives products can be custom manufactured for special grinding operations. Send us your requirements to the email address below or fill out our request quotation form here.

Specifications

- Customized specifications are available for infeed, end-feed & through-feed applications depending on your requirements.
- **A complete range of specifications including standard specifications with abrasive grit sizes (80, 120 and 180) are available. It is important to get the correct abrasive for your requirement.**
- Here at atto abrasives we can tailor our products to suit any particular need & application.



Cored Regulating Wheel (6" x 3")

Rubber Bonded Regulating Wheel

- Size: 6" x 3"
- Size: 152.4 x 76.2mm
- Specification: A80-R-R
- atto Abrasives Rubber Bonded Grinding & Polishing wheel with core MSDS 2019
- Suitable for in-feed, end-feed and through-feed applications

Description

These cored regulating wheels are a part of our atto Abrasives centerless grinding range.

åtto Abrasives is a long-established manufacturer of cored regulating wheels for centerless grinding applications. Our range includes;

- Centerless grinding Work Wheels: available in rubber & cork specifications for Grinding & Polishing Applications
- Centerless grinding Regulating (Control) Wheels: to control the rotation of the workpiece
- Cored Centerless Work Wheels

These regulating & work wheels are custom manufactured to meet the unique centerless grinding requirements of our customers. The centerless grinding process is ideally suited to applications requiring high production rates of cylindrical components. These include manufacturing, taper roller bearings, chrome bar, shafts, tubing, etc. Centreless grinding has evolved to include, thru-feed, in-feed and end-feed centreless grinding & polishing.

The åtto abrasives range of centerless grinding products are manufactured in a calendaring process in order to achieve optimum performance levels. These regulating wheels are available in various specifications to suit the material being worked and to provide the required finish.

They are suitable for in-feed, end-feed and through-feed applications, and provide:

- Consistency
- Versatility
- Improved Gripping Power
- Longer Wheel Life
- Superior Performance

Non-standard (e.g. slotted) & special sizes routinely manufactured

- **Regulating wheels with steel cores for Glebar & Royal Master machines are available upon request.**
- åtto abrasives products can be custom manufactured for special grinding operations, just send us your requirements to the email address below or fill out our request quotation form here.

Specifications

- Customized specifications are available for infeed, end-feed & through-feed applications depending on your requirements.
- **Complete range of specifications including standard specifications with abrasive grit sizes (80, 120 and 180) are available. It is important to get the correct abrasive for your requirement.**
- Here at åtto abrasives we can tailor our products to suit any particular need & application.

По вопросам продаж и поддержки обращайтесь:

Алматы (7273)495-231
Архангельск (8182)63-90-72
Астрахань (8512)99-46-04
Барнаул (3852)73-04-60
Белгород (4722)40-23-64
Брянск (4832)59-03-52
Владивосток (423)249-28-31
Волгоград (844)278-03-48
Вологда (8172)26-41-59
Воронеж (473)204-51-73
Екатеринбург (343)384-55-89
Иваново (4932)77-34-06
Ижевск (3412)26-03-58
Иркутск (395)279-98-46
Россия (495)268-04-70

Казань (843)206-01-48
Калининград (4012)72-03-81
Калуга (4842)92-23-67
Кемерово (3842)65-04-62
Киров (8332)68-02-04
Краснодар (861)203-40-90
Красноярск (391)204-63-61
Курск (4712)77-13-04
Липецк (4742)52-20-81
Магнитогорск (3519)55-03-13
Москва (495)268-04-70
Мурманск (8152)59-64-93
Набережные Челны (8552)20-53-41
Нижний Новгород (831)429-08-12
Киргизия (996)312-96-26-47

Новокузнецк (3843)20-46-81
Новосибирск (383)227-86-73
Омск (3812)21-46-40
Орел (4862)44-53-42
Оренбург (3532)37-68-04
Пенза (8412)22-31-16
Пермь (342)205-81-47
Ростов-на-Дону (863)308-18-15
Рязань (4912)46-61-64
Самара (846)206-03-16
Санкт-Петербург (812)309-46-40
Саратов (845)249-38-78
Севастополь (8692)22-31-93
Симферополь (3652)67-13-56
Казахстан (7172)727-132

Смоленск (4812)29-41-54
Сочи (862)225-72-31
Ставрополь (8652)20-65-13
Сургут (3462)77-98-35
Тверь (4822)63-31-35
Томск (3822)98-41-53
Тула (4872)74-02-29
Тюмень (3452)66-21-18
Ульяновск (8422)24-23-59
Уфа (347)229-48-12
Хабаровск (4212)92-98-04
Челябинск (351)202-03-61
Череповец (8202)49-02-64
Ярославль (4852)69-52-93